

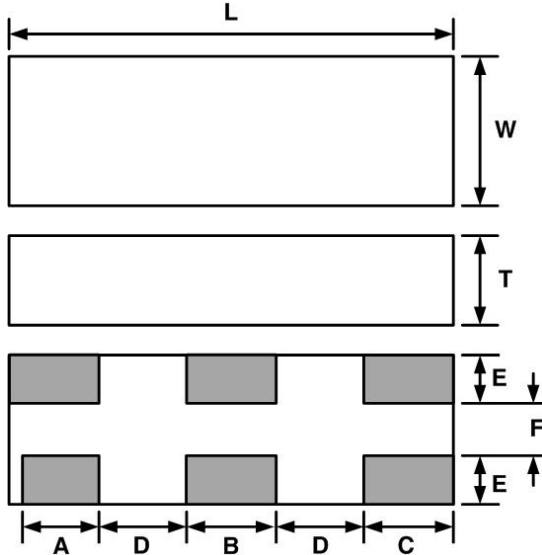
Dielectric Chip Antenna



■ P/N : ACS1575JCDXX

This specification covers the dielectric chip antenna ACS1575JCDXX used in GPS

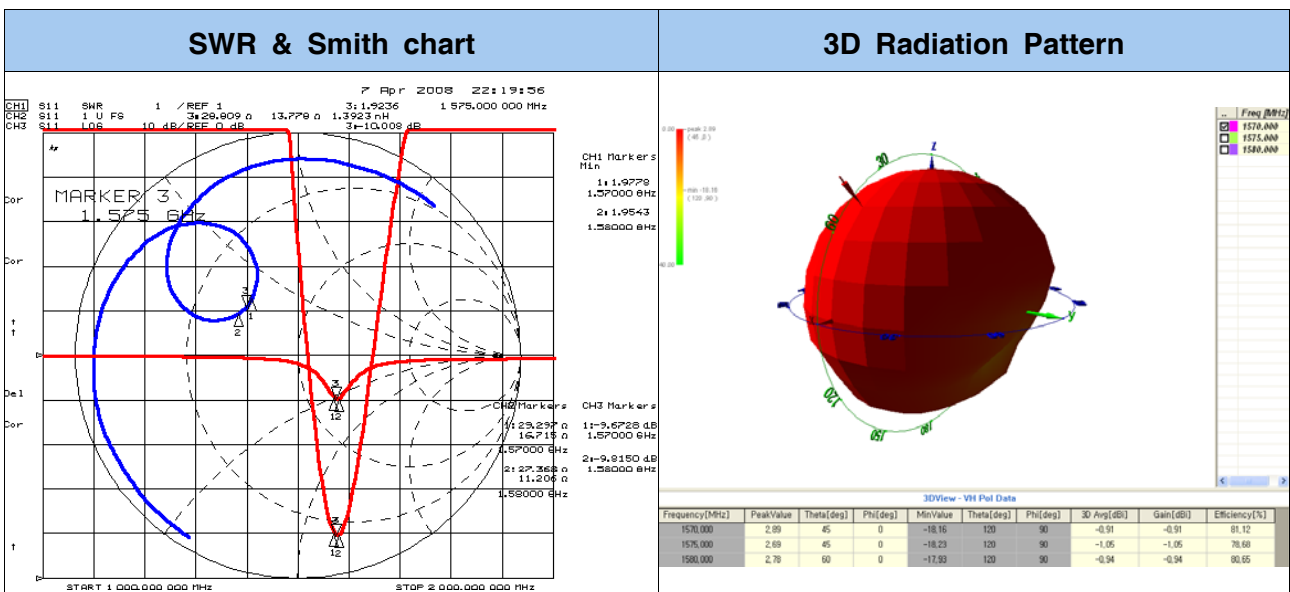
■ MECHANICAL DIMENSION (unit : mm, tolerance : ± 0.1)



L	10.0
W	3.0
T	4.0
A	1.8
B	2.4
C	2
D	1.8
E	1
F	1

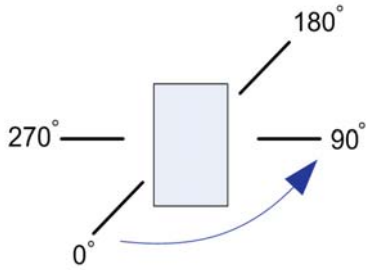
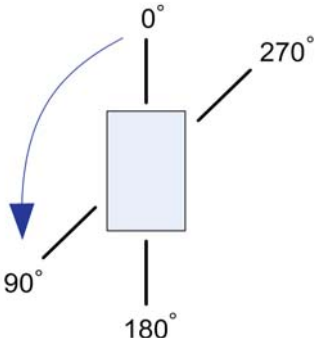
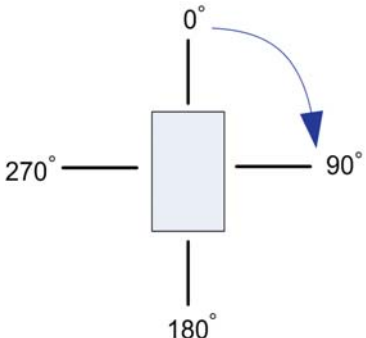
■ ELECTRICAL CHARACTERISTICS

ITEM		SPEC		
Frequency Range		1570 ~ 1580 MHz		
VSWR		2:1 Max		
Polarization		Linear		
Frequency [MHz]		1570	1575	1580
Gain [dBi]	Peak	2.89	2.69	2.78
	Average	-0.91	-1.05	-0.94
Efficiency [%]		81.12	78.68	80.65



ELECTRICAL CHARACTERISTICS (2D)

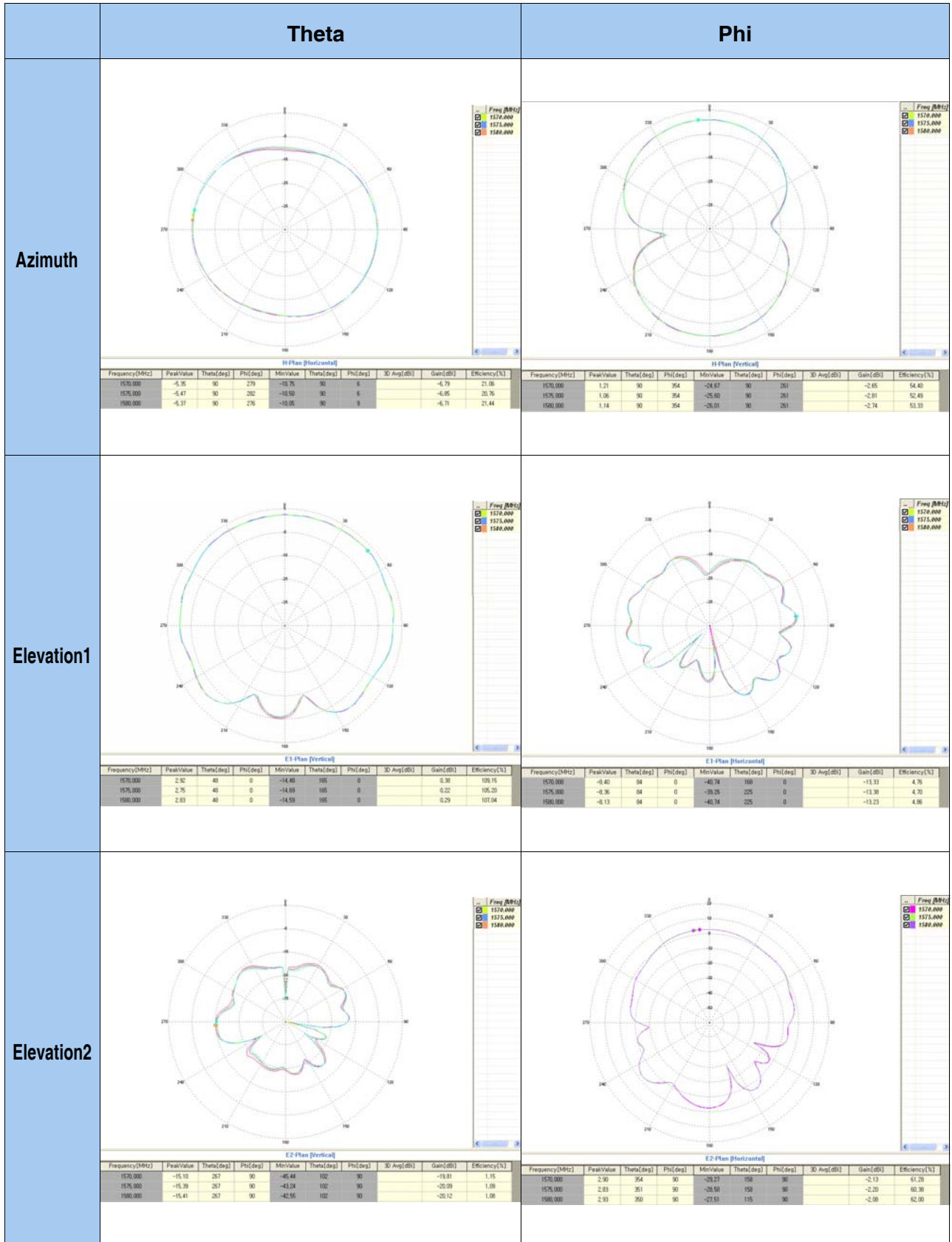
2D Measurement				
Gain	Azimuth	Theta	Peak	-5.28
			Average	-6.75
		Phi	Peak	1.24
			Average	-2.61
	Elevation 1	Theta	Peak	2.97
			Average	0.43
		Phi	Peak	-8.46
			Average	-13.29
	Elevation 2	Theta	Peak	-14.88
			Average	-19.64
		Phi	Peak	2.00
			Average	-2.21

Azimuth Plane	Elevation1 Plane	Elevation2 Plane
		
Theta	Vertical field of measured plane	
Phi	Horizontal field of measured plane	

Dielectric Chip Antenna



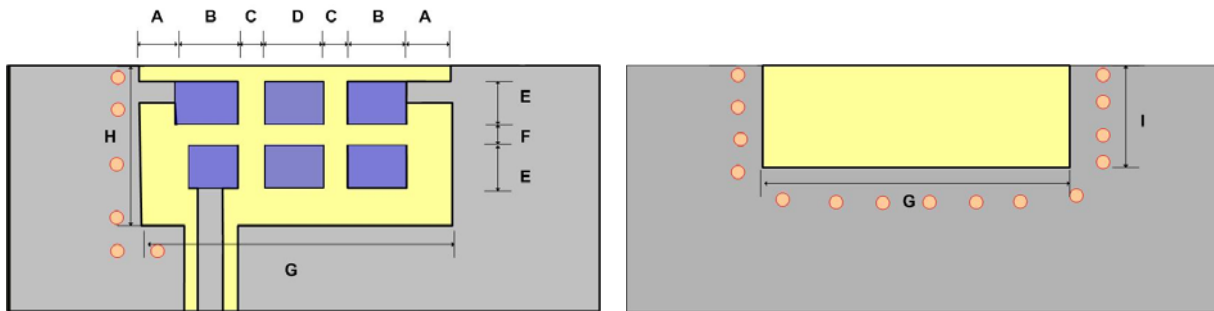
2D RADIATION PATTERN



Dielectric Chip Antenna



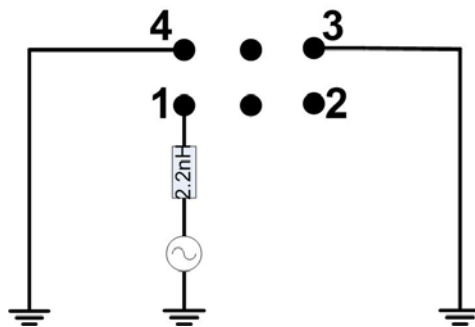
FEEDING METHOD (unit : mm, tolerance : ± 0.05)



< Top View >

< Bottom View >

Parameter	A	B	C	D	E	F	G	H	I
Value[mm]	1	2.2	1.75	2.5	1.2	1	12.4	5	3



< Default Condition Equivalent Circuit >

AutoCAD Drawing of Reference PCB Design

