

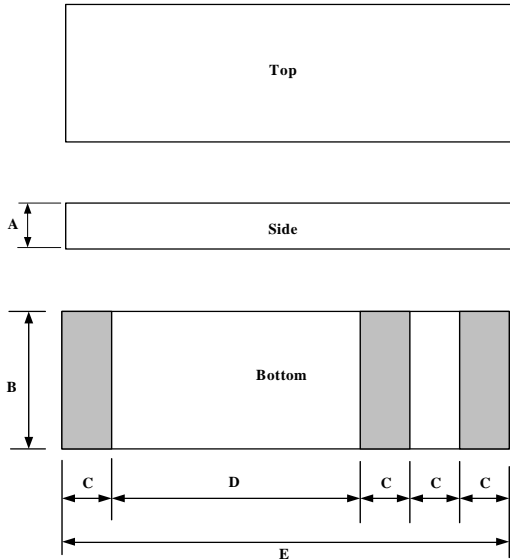
Dielectric Chip Antenna



■ P/N : ACS1575JBAXX

This specification covers the dielectric chip antenna ACS1575JBAXX used in GPS

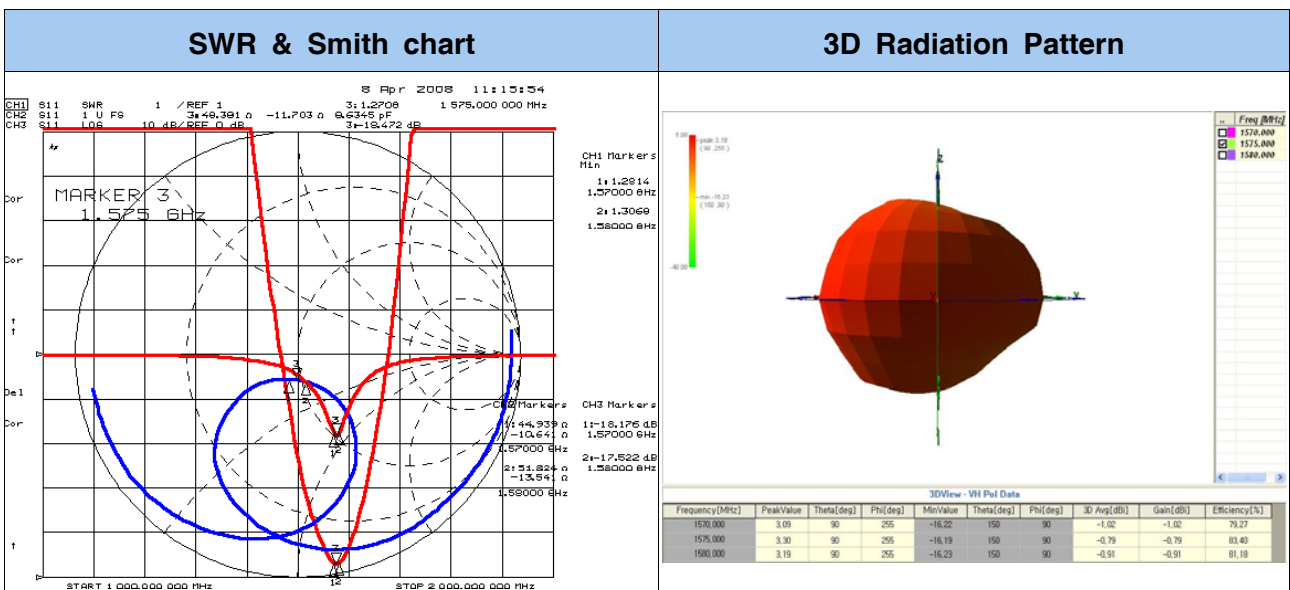
■ MECHANICAL DIMENSION (unit : mm, tolerance : ± 0.1)



A	1.2
B	2.5
C	1.0
D	6.0
E	10

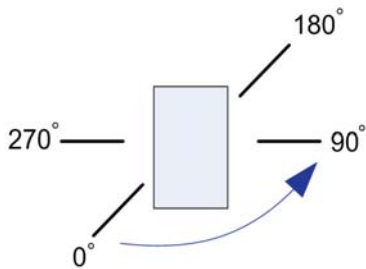
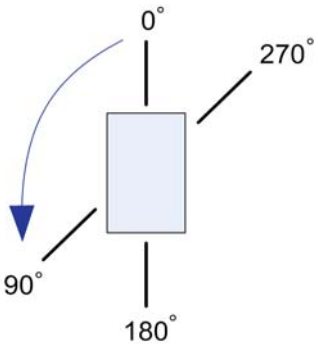
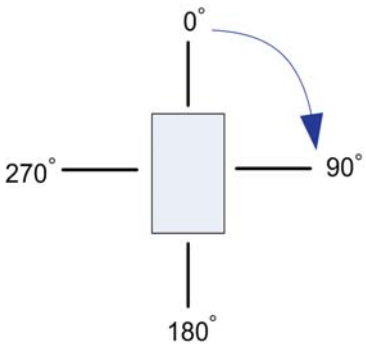
■ ELECTRICAL CHARACTERISTICS

ITEM		SPEC		
Frequency Range		1570 ~ 1580		
VSWR		2:1 Max		
Polarization		Linear		
Frequency [MHz]		1570	1575	1580
Gain [dBi]	Peak	3.09	3.30	3.19
	Average	-1.02	-0.79	-0.91
Efficiency [%]		79.27	83.40	81.18



ELECTRICAL CHARACTERISTICS (2D)

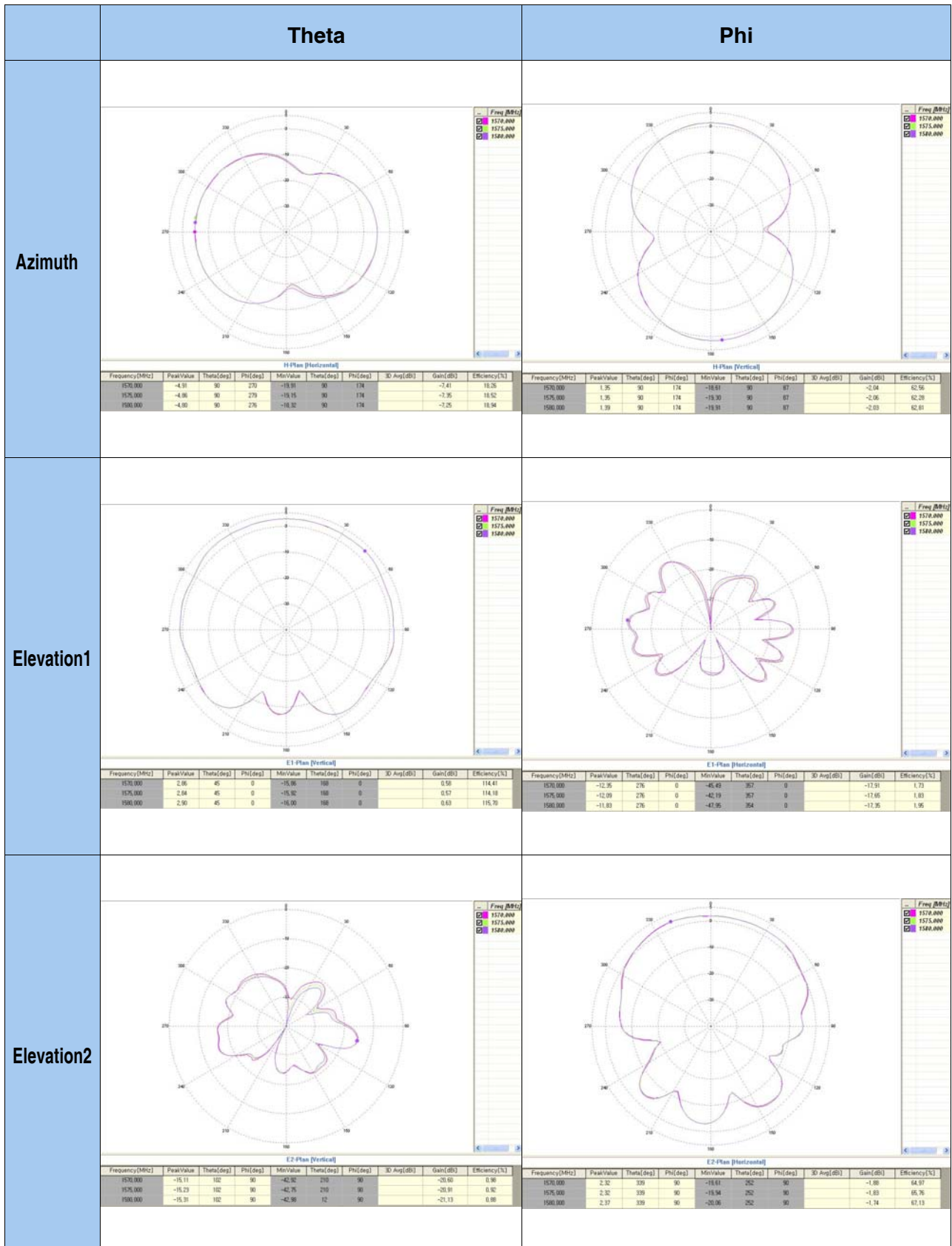
2D Measurement				
Gain	Azimuth	Theta	Peak	-4.80
			Average	-7.25
		Phi	Peak	1.39
			Average	-2.03
	Elevation 1	Theta	Peak	2.90
			Average	0.63
		Phi	Peak	-11.83
			Average	-17.35
	Elevation 2	Theta	Peak	-15.31
			Average	-21.15
		Phi	Peak	2.37
			Average	-1.74

Azimuth Plane	Elevation1 Plane	Elevation2 Plane
		
Theta	Vertical field of measured plane	
Phi	Horizontal field of measured plane	

Dielectric Chip Antenna



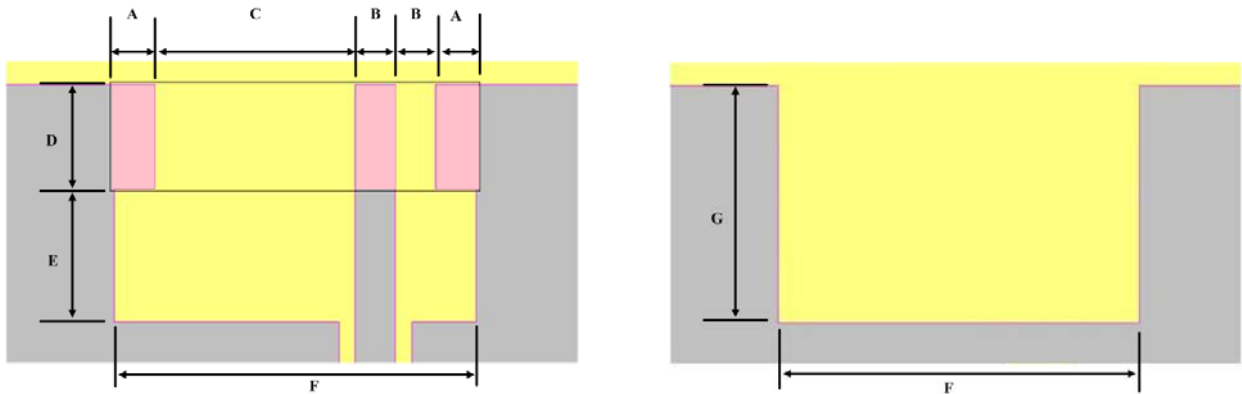
2D RADIATION PATTERN



Dielectric Chip Antenna



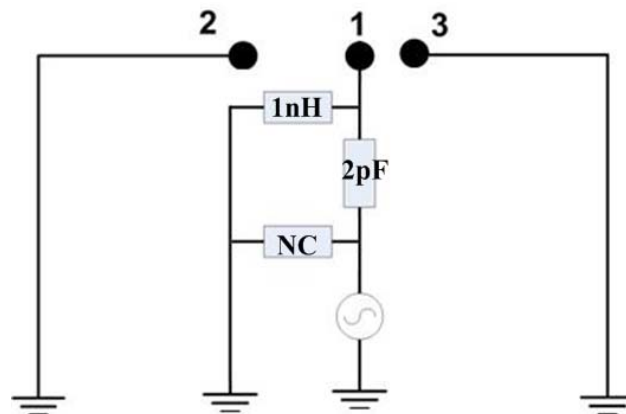
FEEDING METHOD (unit : mm, tolerance : ± 0.05)



< Top View >

< Bottom View >

Parameter	A	B	C	D	E	F	G
Value[mm]	1.1	1.0	6.0	2.7	2.5	10	5.2



< Default Condition Equivalent Circuit >

AutoCAD Drawing of Reference PCB Design

