

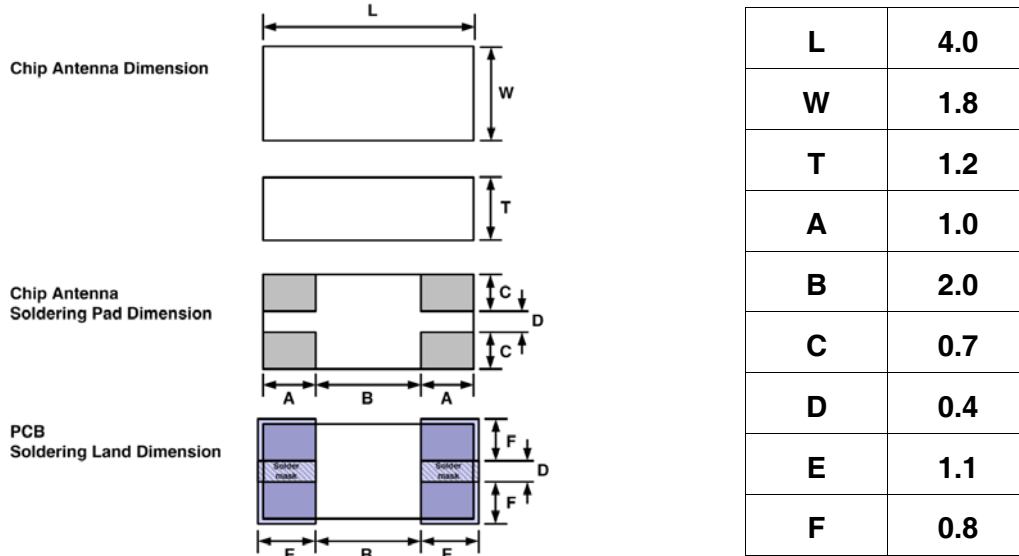
Dielectric Chip Antenna



■ P/N : ODGPTR4018

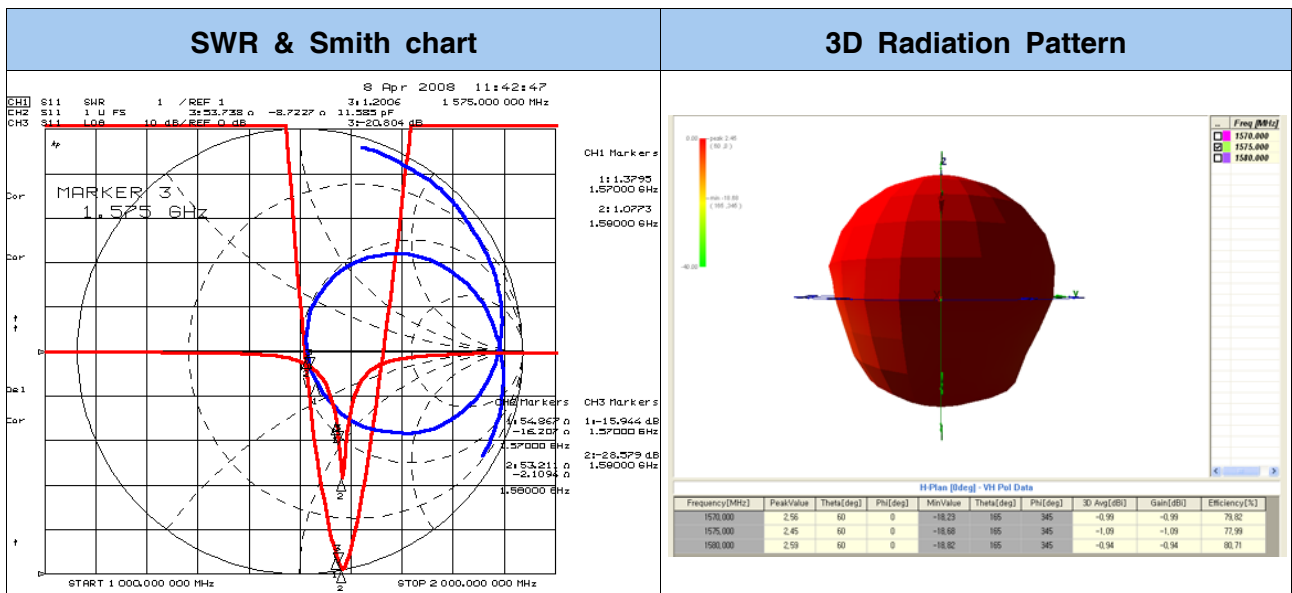
This specification covers the dielectric chip antenna ODGPTR4018 used in GPS

■ MECHANICAL DIMENSION (unit : mm, tolerance : ± 0.1)



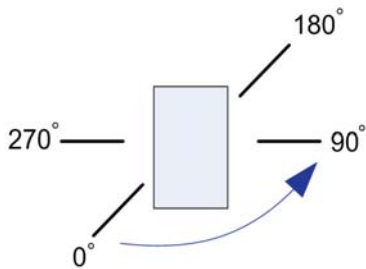
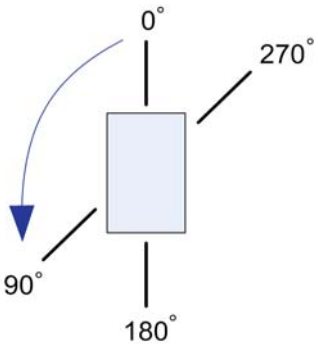
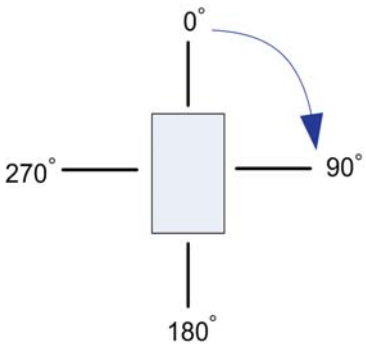
■ ELECTRICAL CHARACTERISTICS

ITEM		SPEC		
Frequency Range		1570 ~ 1580 MHz		
VSWR		2:1 Max		
Polarization		Linear		
Frequency [MHz]		1570	1575	1580
Gain [dBi]	Peak	2.56	2.45	2.59
	Average	-0.99	-1.09	-0.94
Efficiency [%]		79.82	77.99	80.71



ELECTRICAL CHARACTERISTICS (2D)

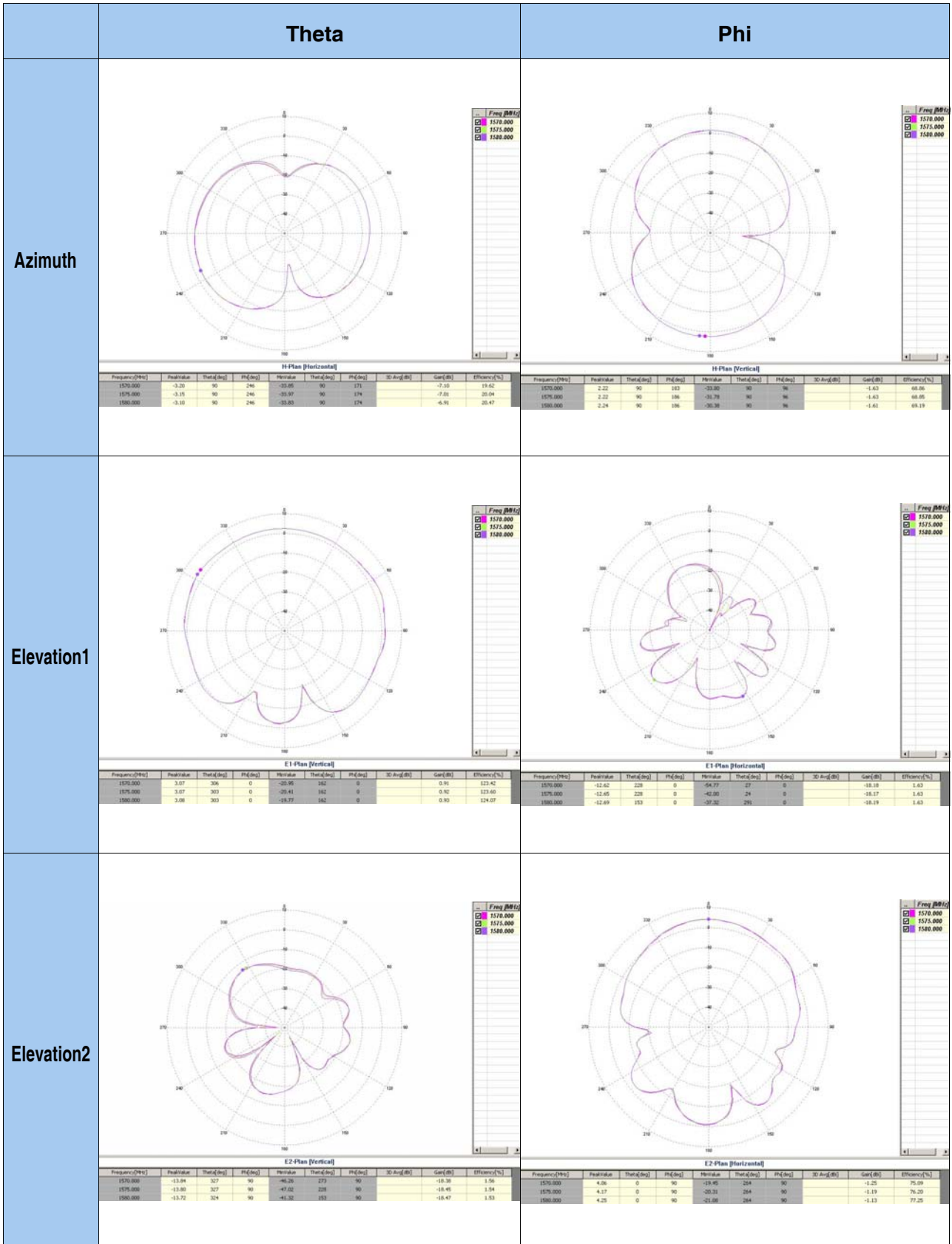
2D Measurement				
Gain	Azimuth	Theta	Peak	-3.10
			Average	-6.91
		Phi	Peak	2.24
			Average	-1.61
	Elevation 1	Theta	Peak	3.08
			Average	0.93
		Phi	Peak	-12.65
			Average	-18.17
	Elevation 2	Theta	Peak	-13.84
			Average	-18.38
		Phi	Peak	4.25
			Average	-1.13

Azimuth Plane	Elevation1 Plane	Elevation2 Plane
		
Theta	Vertical field of measured plane	
Phi	Horizontal field of measured plane	

Dielectric Chip Antenna



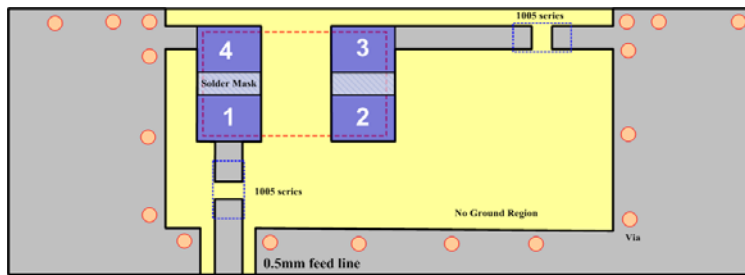
2D RADIATION PATTERN



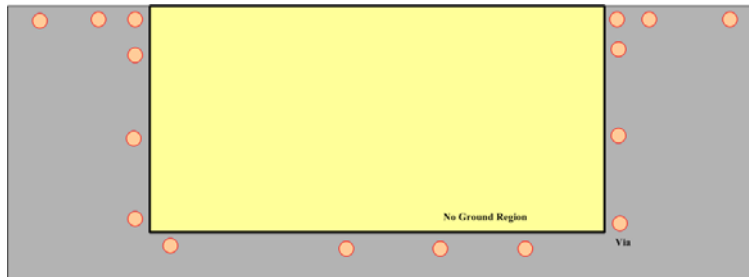
Dielectric Chip Antenna



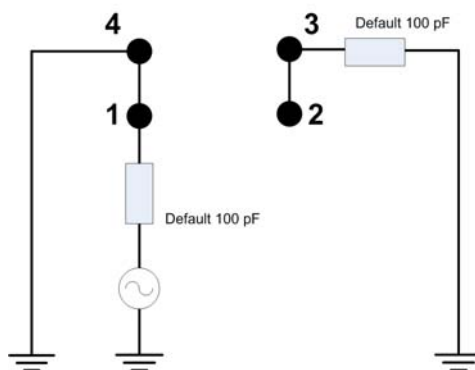
■ FEEDING METHOD (unit : mm, tolerance : ± 0.05)



< Top View >



< Bottom View >



< Default Condition Equivalent Circuit >

■ AutoCAD Drawing of Reference PCB Design

